

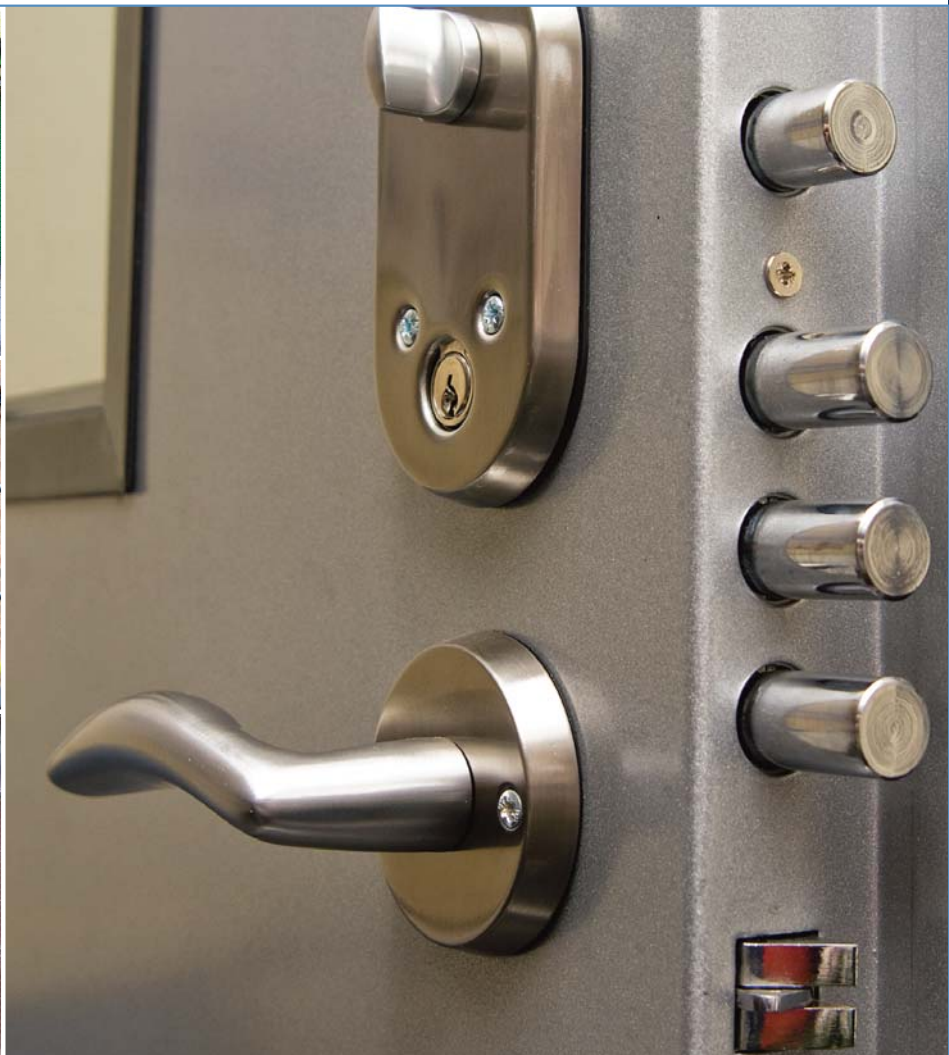
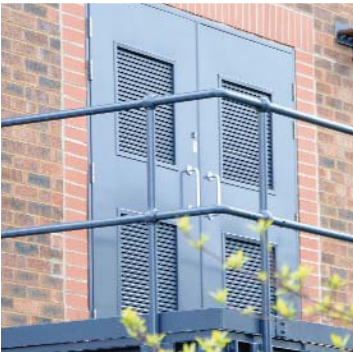


SERIOUSLY STRONG SECURITY

M2M+ M2M1



BRADBURY SECURITY CX2  
CERTIFIED TO PRIVATE ISSUE 6  
SECURITY RATINGS 1  
CERTIFICATE NO. 51264





*Hinge Chassis System*

Your local distributor is:

All in One Security  
6 Gaskells End  
Reading  
Berkshire  
RG4 9EW  
Tel: 0118 972 4077  
www.all-in-one.co.uk

Introducing Bradbury's best ever security doors – the M2M Range of quality British Made Doors are custom built to individual requirements and delivered in unbeatable turnaround times.

M2M doors are suitable for all personnel, fire exit and storeroom use with applications including factories, warehouses, public buildings, shops (back door) and homes (internal garage door).

All M2M doors are designed with a unique **Internal Chassis System** for extra strength and are available with Bradbury's highly popular **Fast Fit Frame** option.

**M2M<sup>+</sup>** available as a single, leaf and half and double door with a very large selection of options and extras so each door can be tailor-made to customer requirements.

**M2M<sup>1</sup>** an outward opening single door design certified to LPS 1175 Security Rating 1



## SPECIFICATION

### Door Frame

- Manufactured from 1.6mm Zintec Steel
- Fast Fit Frame supplied with 12 Adjusters and Hex Tool for tightening (standard frame option available)
- Internal Hinge Chassis System
- 90mm single rebate profile (150mm option available)
- Integral mounting plates
- Prepared for inside and outside fixing
- P Seals

### Threshold

- Disability Discrimination Act (DDA) compliant aluminium threshold

### Door Leaf

- Manufactured from 1.2mm Zintec Steel
- Folded 45mm thick leaf with composite Dufaylite honeycomb core
- Integral Anti Jemmy Strip to prevent against attack with a crowbar

### Security Door Hinges

- Minimum of 4 high quality stainless steel hinges (BS 1935:2002 grade 13) (larger doors have 6 hinges)

### Security Door Dog Bolts

- Minimum of 7 no. 17.5mm solid steel dog bolts (9 on larger doors)

### Finish

- Primed as standard or powder coating available in a wide choice of colours.

### Options

- Manual, 14pt or electric locking
- Single or double Euro Profile Cylinders
- Fire exit hardware
- Selection of handles, closers and limit stays
- Louvres or glazing with Georgian Wired Glass, Polycarbonate or Laminate

**Note:** In addition to the M2M Range Bradbury Security design and manufacture doors for a wide range of specialist applications.

### Other products from Bradbury Security

Fire Doors, Communal Entrance Doors, Substation Doors, CX Retractable Security Grilles, Optiguard Vandal Protection Screens and Cross-guard Cash and IT Security Products.



QUALITY SYSTEMS CERTIFICATE NO. 312  
ASSESSED TO ISO9001:2000